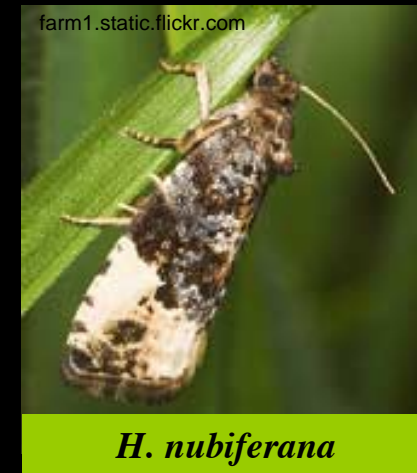


„BISEX” trap for apple clearwing moth *Synanthedon myopaeformis* Borkhausen;
codling moth - *Cydia pomonella* L.; splendid piercer - *Cydia splendana* Hübn.;
cloudy white marble - *Hedya nubiferana* Haw.

The lure in the CSALOMON® "BISEX" trap is NOT a pheromone, rather it is a feeding attractant, therefore the trap will catch both FEMALES and MALES, It can be recommended for use first of all in orchards with air permeation (mating disruption) where pheromone traps do not work.



Moth pests attracted by the CSALOMON® "BISEX" lure:



The CSALOMON® "BISEX" trap should be placed:
for catching *S. myopaeformis* into the crown of trees at a height of 1.5-2.0 m,
for catching *C. pomonella* on the highest branches of the tree (this is of UTMOST importance!!!),
for catching *C. splendana* as high as possible in the higher part of the crown (in case of a large tree at a height of min. 4.0 – 4.5 m),
for catching *H. nubiferana* into the crown of trees at a height of 1.5-2.0 m.

Suggested start of trapping is beginning of May for *S. myopaeformis*, end of April for *C. pomonella*, middle of July for *C. splendana*, beginning of May for *H. nubiferana*, resp.

Selectivity of the CSALOMON® "BISEX" trap: apart from the four target moths it can catch smaller numbers of other tortricids, depending on site (*Adoxophyes*, *Archips*, *Pammene* stb.), more rarely some noctuids. In or near forests satyrid butterflies (*Coenonympha*, *Pararge*, etc.) can also come in. If these are caught, due to their size they can decrease the sticky surface significantly; in such cases the replacement of the sticky insert may become necessary more often. Occasionally large numbers of flies (Diptera) can also come into the traps

Longevity of the CSALOMON® "BISEX" trap: depending on environmental factors at least **3-4 weeks**. After this period we suggest to set up a new trap for most effective detection and monitoring. Renewal of sticky inserts in intervals of 7-10 days.

Efficiency of the A CSALOMON® "BISEX" trap: as compared to the catch of the respective pheromone trap (only males) the "BISEX" trap catches (females plus males):

Target moth species:	<i>S. myopaeformis</i>	<i>C. pomonella</i>	<i>C. splenana</i>	<i>H. nubiferana</i>
Amount of moths caught in the "BISEX" trap as compared to catches in the respective pheromone trap:	30-50 % ^[1]	10-30 % ^[2,3]	10-30 % ^[3]	30-50 % ^[4]

Due to the above characteristic of the "BISEX" traps 2 to 4 traps per 1 – 5 ha can be recommended for reliable monitoring. The great advantage of the "BISEX" traps is that they are suitable for monitoring the flight also on areas with air permeation (mating disruption), where traditional pheromone traps do not work (as air permeation, if successful, interferes with pheromonal communication). Their application of the "BISEX" trap can also be very useful when it is necessary to capture females of the target pest (i.e. studies on fertility and fecundity, etc.). In contrast to the "BISEX" traps traditional pheromone traps of moths catch only males.

[1] Tóth, M. et al., *Ent. exp. appl.* 142:27-35, 2012; [2] Hári, K. et al., *Acta Phytopath. Entomol. Hung.* 46:225-234, 2011; [3] Tóth, M. et al. *Acta Phytopath. Entomol. Hung.* 49:37-47, 2014; [3] Jósvai, J.K. et al., *pers.comm.*; [4] Jósvai, J.K. et al., *Int. Term. Kert. Szántóf. Kult.* 30:56-61, 2013.



is a registered trademark of the Plant Protection Institute, CAR HAS

To order / to inquire: MTA ATK Növényvédelmi Intézet (Plant Prot. Inst. HAS) Budapest, Pf 102, H-1525, Hungary; phone. +(36-1)-391-8637, +(36)-30-9824999; fax +(36-1)-3918655;

e-mail: <csalomon.orders@agrar.mta.hu>; internet: <www.csalomontraps.com>

The CSALOMON® "BISEX" trap catches several moth spp. (on the picture catches of apple clearwing and codling moth)

Foto: J6svai J.



The CSALOMON® "BISEX" trap catches females also!

So it looks when caught in the CSALOMON® "BISEX" trap!

The CSALOMON® "BISEX" trap catches several moth spp. (on the picture catches of cloudy white marble)



H. nubiferana

Foto: Jurkó V.



Foto: Jósvai J.

C. splendana

The CSALOMON® "BISEX" trap catches several moth spp. (on the picture catches of splendid piercer)

So it looks when caught in the CSALOMON® "BISEX" trap!

Non-target catches in the
CSALOMON® "BISEX"
trap:

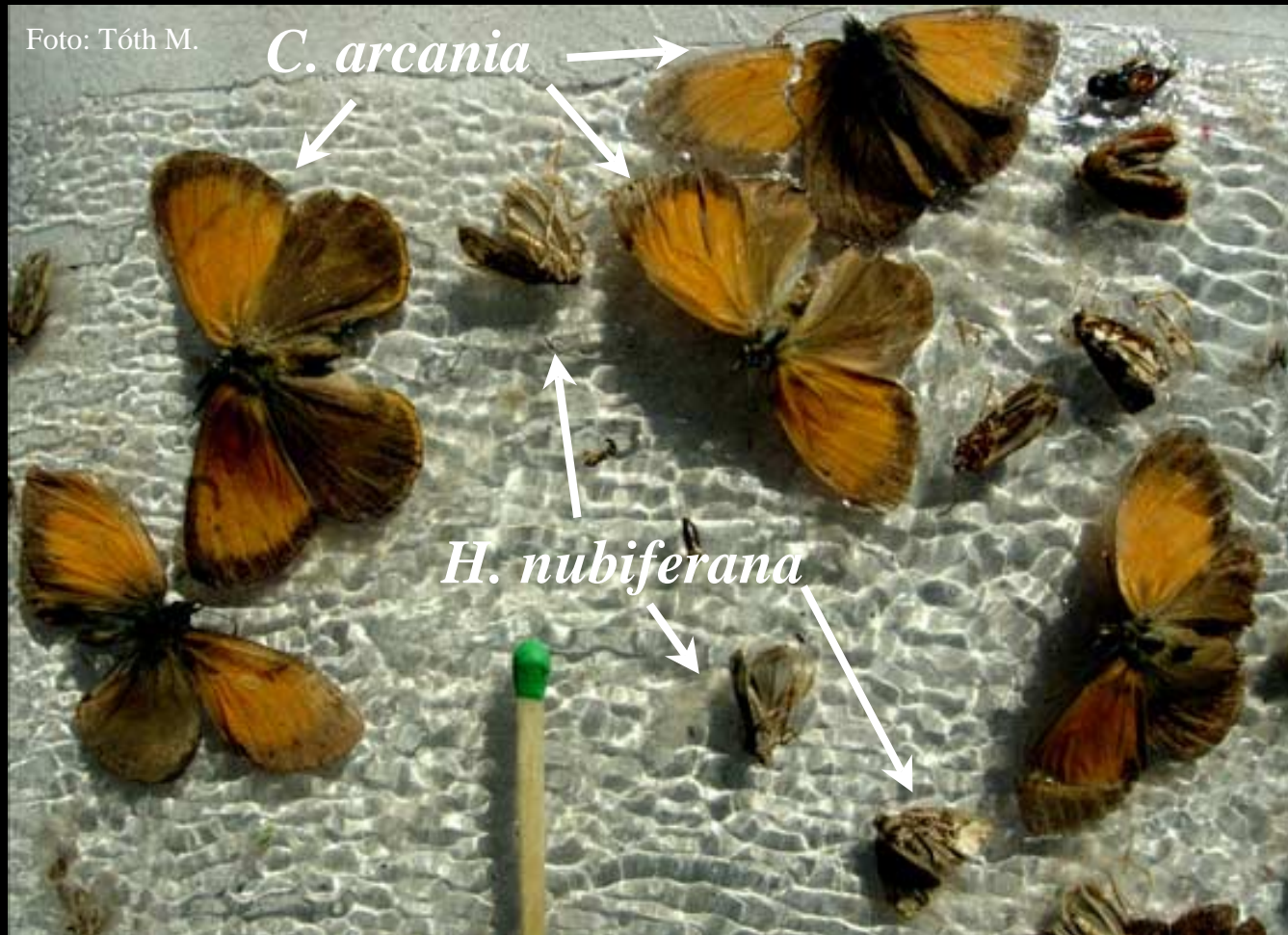
Archips sp.

Coenonympha sp.

The CSALOMON®
"BISEX" trap catches
several moth spp. (on the
picture catches of *Archips*
sp. and satyrid butterflies)



Non-target catches in the CSALOMON® "BISEX" trap:



Occasionally some butterflies are also captured. In such a case replacement of sticky insert may be necessary more often